

Grade 10 Graphics Everyday Spaceship Assignment

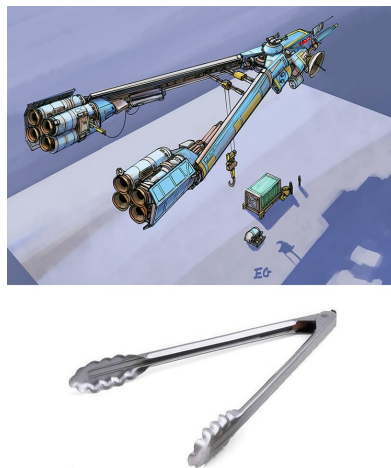
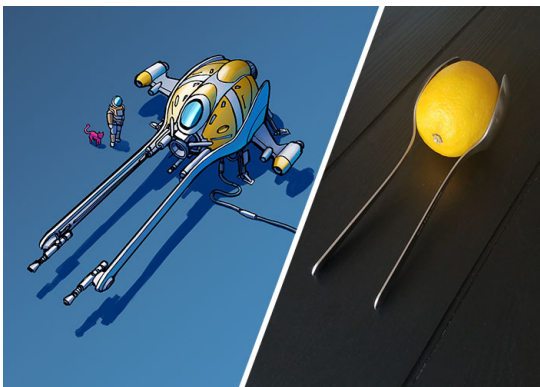
Your mission, should you choose to accept it, is to take inspiration from the world around you and design a spaceship in TinkerCAD based on an everyday object. This could be anything from a can opener, to a chess piece, to a shoe.

Step 1: Find an object (or combination of objects) that you would like to turn into a spaceship. Take a photo and hand it in on google classroom.

Step 2: Mr. Strang will print off your photo. Start by sketching some parts. Where are the engines, does it have wings, fuel tanks, sensors, solar panels? What's the ship's purpose? Does it haul cargo, conduct research or defend a planet?

Step 3: Once you have a sketch, it's time to get 3D modeling! Start by modeling your original object, then add in other components. Take your time and add lots of detail!

Step 4: When the design is done, we will 3D print our ships and you will have the option to paint them.



Name: _____

Grade 10 Graphics Everyday Spaceship Rubric

	Nailed It 3 Marks	Good Work 2 Marks	Good Enough 1 Mark	Not Yet 0 Marks
Everyday Object Photo	The photo will work well for the sketch and was handed in on time	The photo will work and was handed in on time	The photo is ok and/or was handed in late	No photo was handed in
Spaceship Sketch	The sketch is exceptionally detailed and clearly drawn. It will be a great resource for the 3D model.	The sketch has some detail and will be a good reference for the 3D model.	The sketch is basic. It will be somewhat helpful for the 3D model.	No sketch was handed in
3D Model Detail	All components of the model have lots of detail. Time and effort were clearly spent on all components.	The model is fairly detailed but could have used some more time.	The model is basic.	No spaceship was handed in
3D Model Realism	The spaceship has all parts that a real spaceship would need. This could include <ul style="list-style-type: none"> ● Cockpit ● Engines ● Wings ● Fuel Tanks ● Sensors ● Solar Panels ● Access Hatches ● Etc... 	The spaceship has almost all of the parts that a real spaceship would need.	The spaceship is missing a number of major parts.	No spaceship was handed in
3D Print	The spaceship was submitted on time to be 3D printed. Any support material was cleaned off nicely and the model was painted.	The spaceship was submitted on time to be 3D printed. It could have been cleaned up better or painted.	The spaceship was submitted late.	No spaceship was 3D printed.

Total __/12